

# UHEALTH & MILLER SCHOOL OF MEDICINE OSTOMY HURRICANE PREPAREDNESS PRESENTATION

August 27, 2019

1

## AGENDA

- **Welcome**

- **Speakers**

- Ana M. Restrepo, BSN, RN, CWON, Inpatient Wound Care Coordinator
- Vincent Torres, Emergency Manager UHealth & Miller School of Medicine
- Alicia Horner, Emergency Management Coordinator Health & Medical Miami-Dade Office of Emergency Management
- Roberto Cepeda, Emergency Management Coordinator Miami-Dade Office of Emergency Management

- **Brief Review of 2018 Hurricane Season**

- **2019 Hurricane Preparedness Overview**

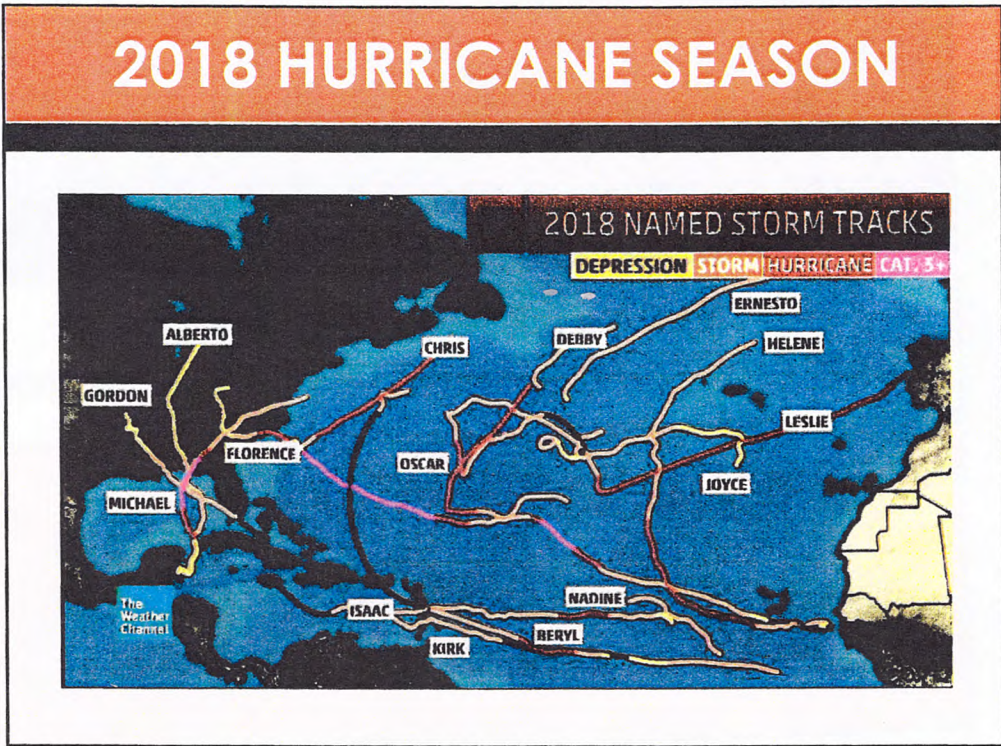
- **Preparation, Response, and Recovery**

- **Miami-Dade Office of Emergency Management**

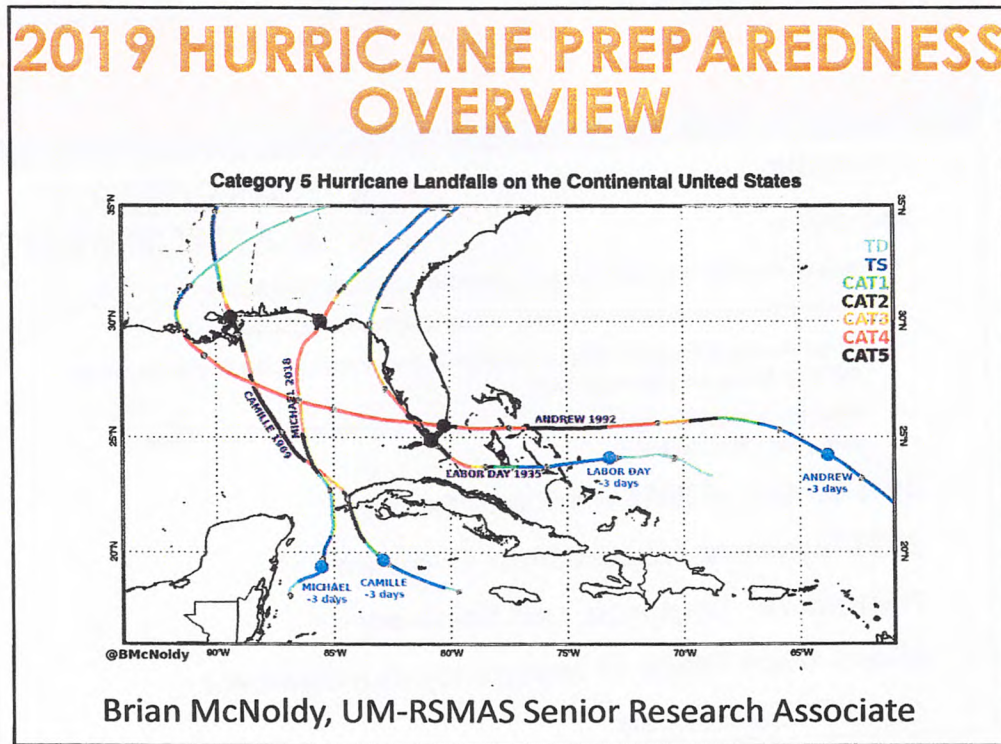
- **Questions & Answers**



2



3



4

# 2019 FORECAST

IT ONLY TAKES ONE

5

## Every Storm Is Different

MATTHEW 2016

IRMA 2017

Radar Images Near Time of Closest Approach to Miami

6

# FORECAST

## Understanding the Cone

**2004 CONE**  
**2009 CONE**  
**2011 CONE**  
**2019 CONE**

Example Storm

- The cone represents the probable track of the CENTER of a tropical cyclone.
- The size of the cone is drawn so that about two-thirds of the time, the center of the storm will remain in the cone.
- The cone does NOT take into account the size of the storm.
- A hurricane is not a point; impacts often occur well outside of the cone.
- The cone is used to show the forecast up to 5 days out from the last recorded position of the storm.

7

# HOW WE PLAN

- Generally plan for one category up from the forecasted intensity
- Do not plan based on the center line of the cone
- Preparatory actions begin **96-72 hours** before anticipated arrival of tropical storm force winds (TSFW)

Hurricane Michael - Monday, October 8, 2018 6 PM EDT Advisory #9  
Center Location: 22.2 N 85.2 W Max Sustained Winds: 85 mph (Cat 1) Movement: 9 mph N

Hurricane Michael - Tuesday, October 9, 2018 11 PM EDT Advisory #14  
Center Location: 27.1 N 86.5 W Max Sustained Winds: 125 mph (Cat 3) Movement: 12 mph N

8

## PRE-SEASON PREPARATION

- Develop a plan NOW with your family and friends
- Having a support system in the event of a disaster may increase your confidence in handling various situations.
- FEMA suggests medicine or medical supplies on hand to last you on your own for at least 7-10 days
- Extra ostomy supplies 7-10 days
- Copies of prescriptions, dosage or treatment information, specific order number and name of ostomy products used.
- Healthcare provider and medical insurance contact information with your emergency supplies in a water proof bag / container.
- Register with the Miami-Dade County Office of Emergency Management Emergency and Evacuation Assistance Program (EEAP)

9

## OSTOMY HURRICANE KIT

### Your Ostomy Hurricane Kit (7-10 Days)

- |   |  |
|---|--|
| <ul style="list-style-type: none"> <li>• Extra pouch(s)</li> <li>• Extra baseplate(s)</li> <li>• Multiple trash bags – in the event of a "there's no-bathroom and my ostomy pouch is full!" emergency you could empty into one of these</li> <li>• Measuring guide</li> <li>• Scissors</li> <li>• Preferred adhesive paste/seal</li> <li>• Non-perishable, ostomy-friendly foods</li> </ul> | <ul style="list-style-type: none"> <li>• Extra clip – if you use a pouch with a clip</li> <li>• Skin Barrier wipes</li> <li>• Adhesive Remover Wipes</li> <li>• Hand sanitizer</li> <li>• Small handheld mirror</li> <li>• Soap</li> <li>• Gauze/Paper Towels</li> </ul> |
|---|--|

10

## YOUR OSTOMY NEEDS:

### Plan on extra water if you have an ostomy:

- 1 GALLON OF WATER A DAY PER PERSON FOR 3-7 DAYS. (aprox 16/ 8 oz cups).
- Have at least an extra gallon for yourself per day for hygiene.
  - You may want to purchase fluids that are enriched with electrolytes to prevent dehydration or oral hydrations powders (H2ORS)
  - If you do not have advance notice, consider water sanitation devices available from camping or outdoor equipment retailers.
  - If you have a water heater in your residents that is a large water source. Close off water valve before loss of water pressure. Be sure to boil or otherwise sanitize water before drinking it.

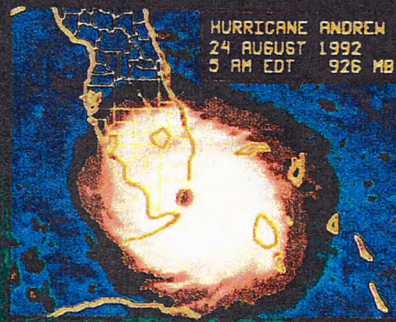


11

## YOUR OSTOMY NEEDS:

### MANUFACTURERS ASSISTANCE PROGRAMS

- Please call directly to ask for information and to apply for these programs.
  - ConvaTec or 800-422-8811
  - Hollister or 800-323-4060
  - Coloplast or 877-781-2656



12

## YOUR OSTOMY NEEDS:

### ALTERNATIVE LOCAL RESOURCES

- Contact the following types of agencies in your area, and ask if they maintain a "Donation Closet".
  - Local hospitals
  - Local clinics
  - Local Goodwill Industries
- Call your state's 2-1-1 number. Just dial 211 as you would 911.
- UOAA has Affiliated Support Groups who sometimes operate Donation or Supply Closets.
- Kindred Box is a Facebook Group for Ostomy Supplies

13

## YOUR OSTOMY NEEDS:

### LOWER COST SUPPLY OPTIONS:

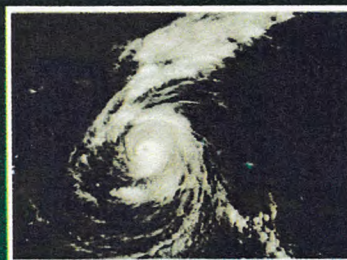
- There are several distributors that do not accept insurance; therefore, their supplies may be available at a lower price.
  - Best Buy Ostomy Supplies: 866-940-4555
  - Mercy Surgical Dressing Group: 888-637-2912
  - Ostomy4less: 877-678-6694
  - Parthenon Ostomy Supplies: 800-453-8898
  - Stomabags: 855-828-1444

14

## YOUR OSTOMY NEEDS:

### SUPPLIES AVAILABLE WITH S + H:

- Osto Group: 877-678-6690
- Offers supplies for the cost of shipping and handling. They have a small all-volunteer staff, but if you call and leave a message, they will respond. Please be patient in awaiting a response.
- Ostomy 211:
  - <https://ostomysupplies.ostomy211.org>
  - Emergency supply pantry.
  - Donation requested to help cover expenses.



Hurricane Irma 2017

15

## YOUR MEDICAL NEEDS:

### Communicate Your Needs:

- If you find yourself in a situation where you don't have enough medical supplies or medications you need, don't wait until you run out to tell someone you need help.
- Special Needs Shelters usually have a Medical Unit on site for very basic medical needs. Talk to them and any other organizations who are on site to let them know you need help.
- It takes time to get supplies and medication arranged so giving medical staff a heads up before you run out is best.
- Use UOAA's list of Emergency Supply Resources or contact a local support group in the area you have been evacuated to if you need help locating supplies

16



## YOUR MEDICAL NEEDS:

### Know Your Benefits:

- If you live in a federally declared disaster area, you are entitled to replacement prescriptions and medical supplies.
- Call your insurance company to find out what you need to do to replace what you lost.
- If you are covered by Medicare, information regarding replacing lost medical supplies in a disaster can be found on their website [www.medicare.gov](http://www.medicare.gov) or call 1-800-MEDICARE.

17

## RESOURCES

- Emergency & Evacuation Assistance
- [https://www8.miamidade.gov/global/service.page?Mduid\\_service=ser1470238193996672](https://www8.miamidade.gov/global/service.page?Mduid_service=ser1470238193996672)
- Ostomy 211
  - <https://ostomysupplies.ostomy211.org>
- Miami-Dade Office of Emergency Management
- <https://www8.miamidade.gov/global/emergency/home.page>

18

# THANK U

**Vincent Torres, Emergency Manager**

UHealth / Miller School of Medicine  
Department of Public Safety  
Cell: (305) 989-5987  
Office: (305) 243-9466  
Email: VJT3@miami.edu

**Elyzabeth Estrada, Training & Exercise Coordinator**

UHealth / Miller School of Medicine  
Department of Public Safety  
Cell: (305) 469-7276  
Office: (305) 243-2215  
Email: ete11@miami.edu

